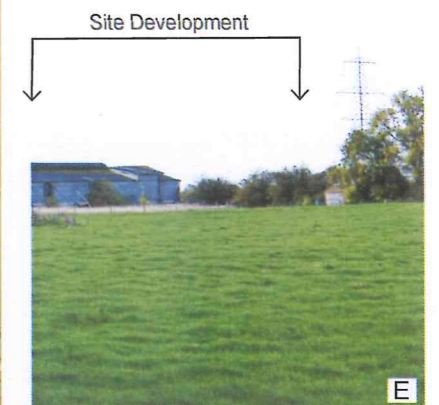
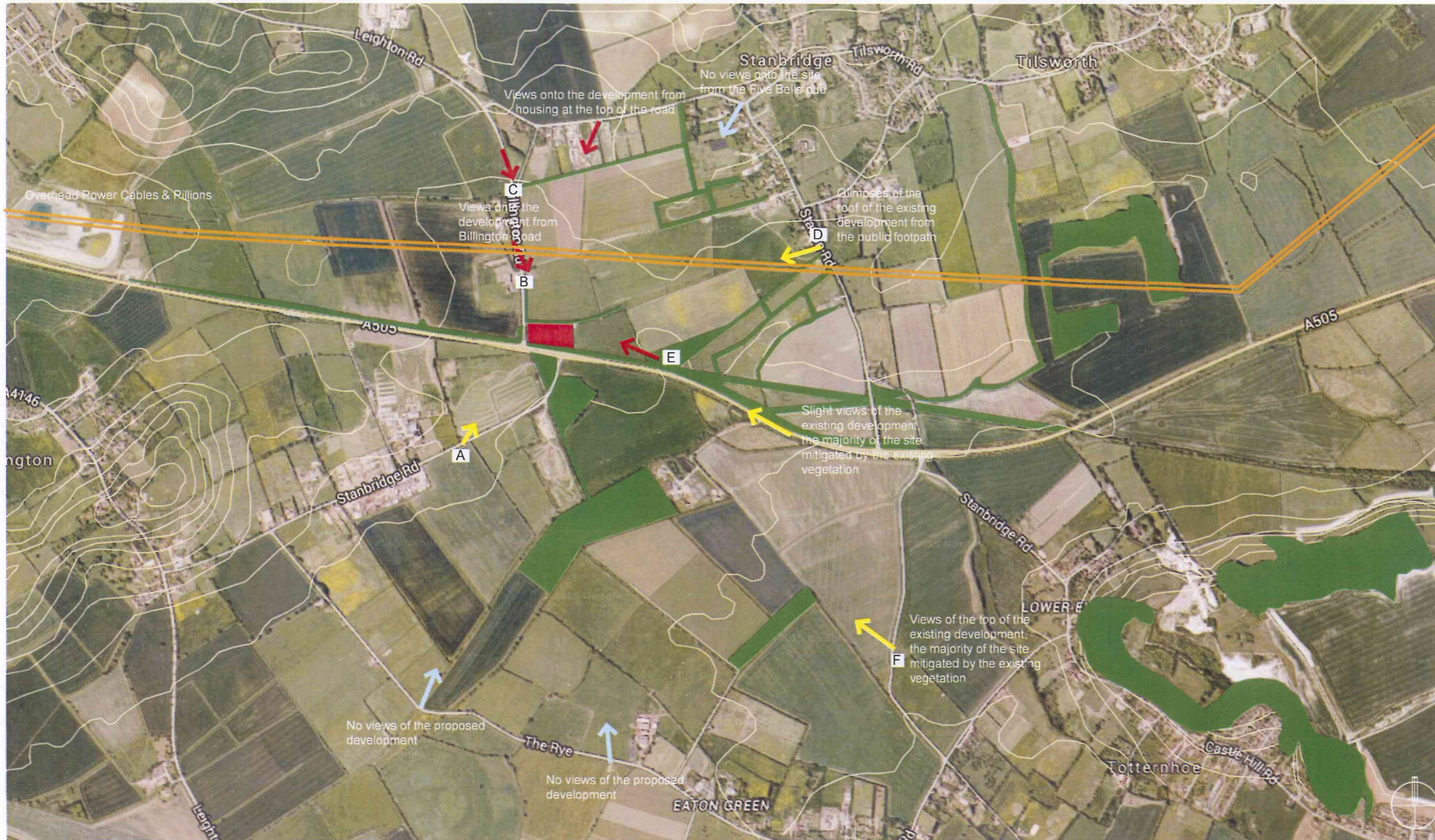
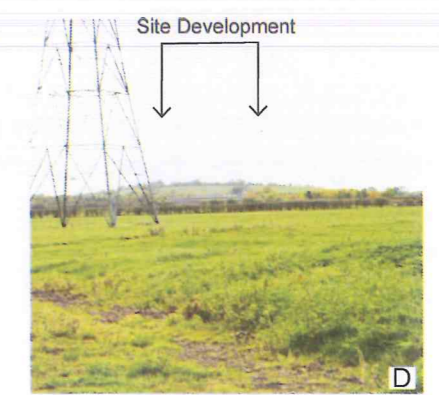
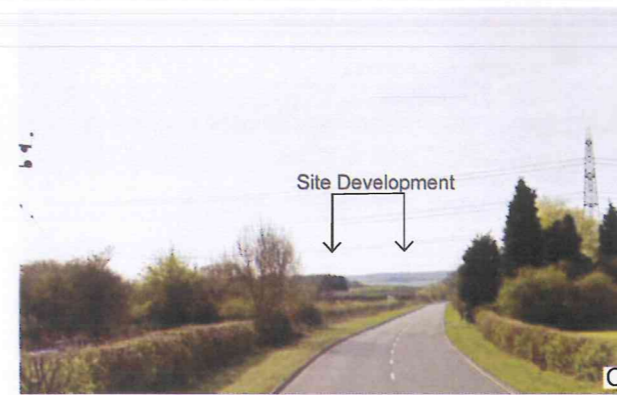
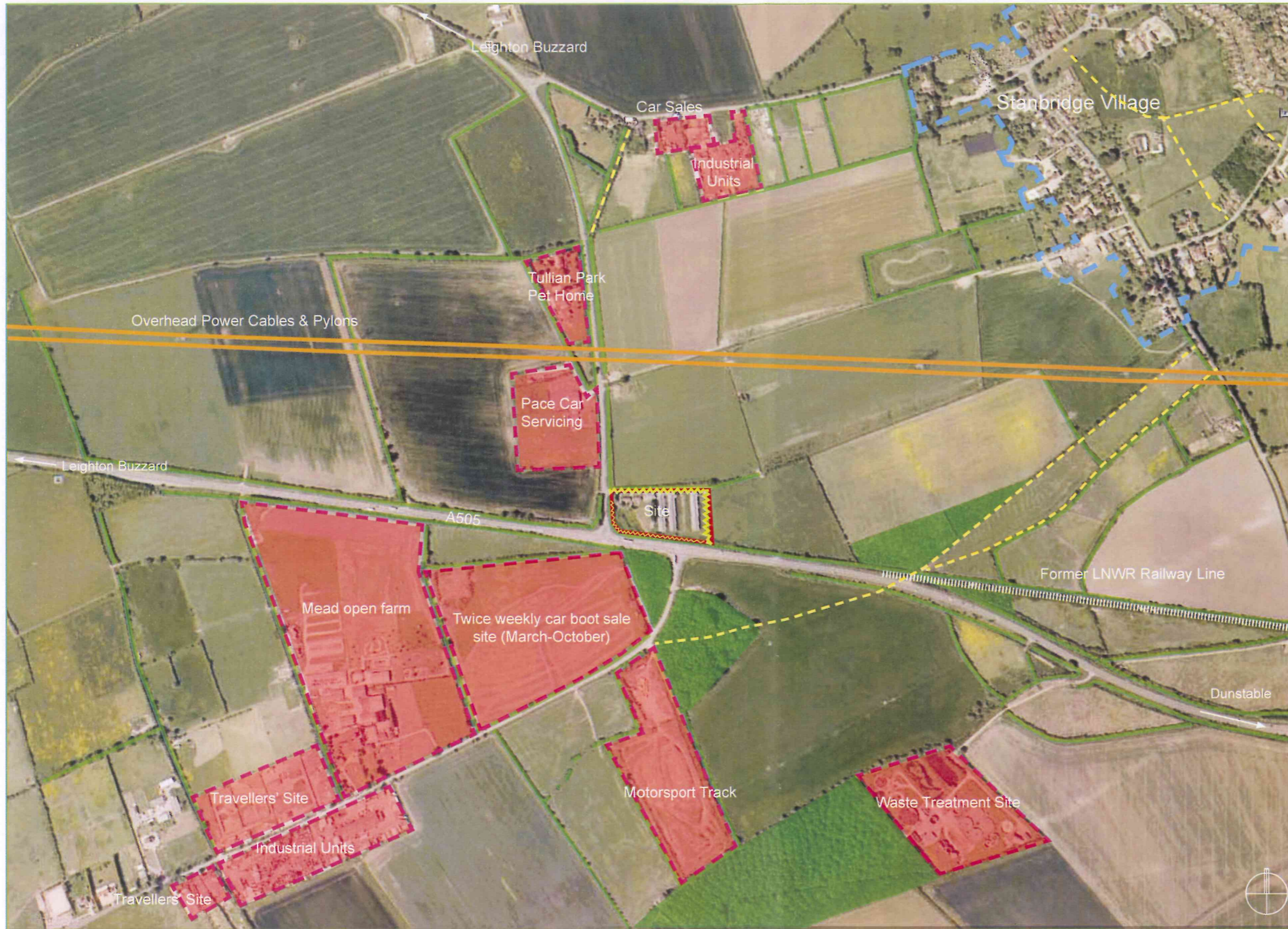


20/10/2015





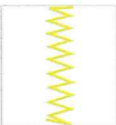
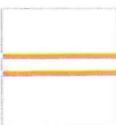




KEY	
	Principle Elements Existing Vegetation
	Existing Contours
	Views of Site
	Limited Views of Site
	No Views of Site
	Overhead Power Cables & Pylons

PROJECT		
Stanbridge Crossing		
CLIENT		
Brickhill Properties		
DRAWING		
Long Distance Visual Analysis- Late Summer		
SCALE	DRWG No.	DATE
NTS	QD680_100_01.01	20.10.15
© COPYRIGHT 2015 QUARTET DESIGN		

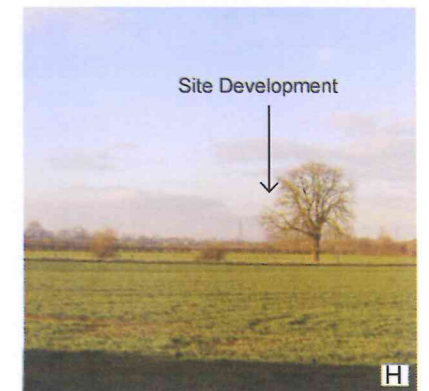
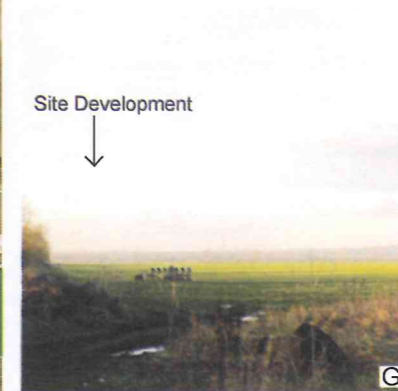
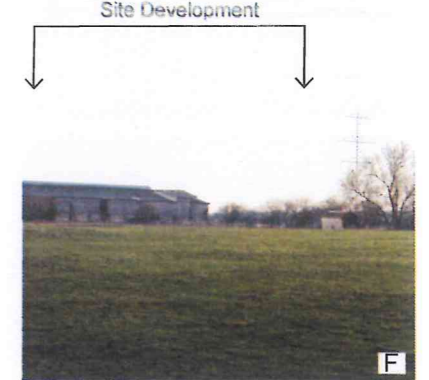
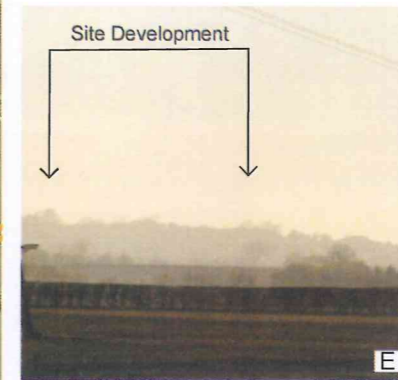
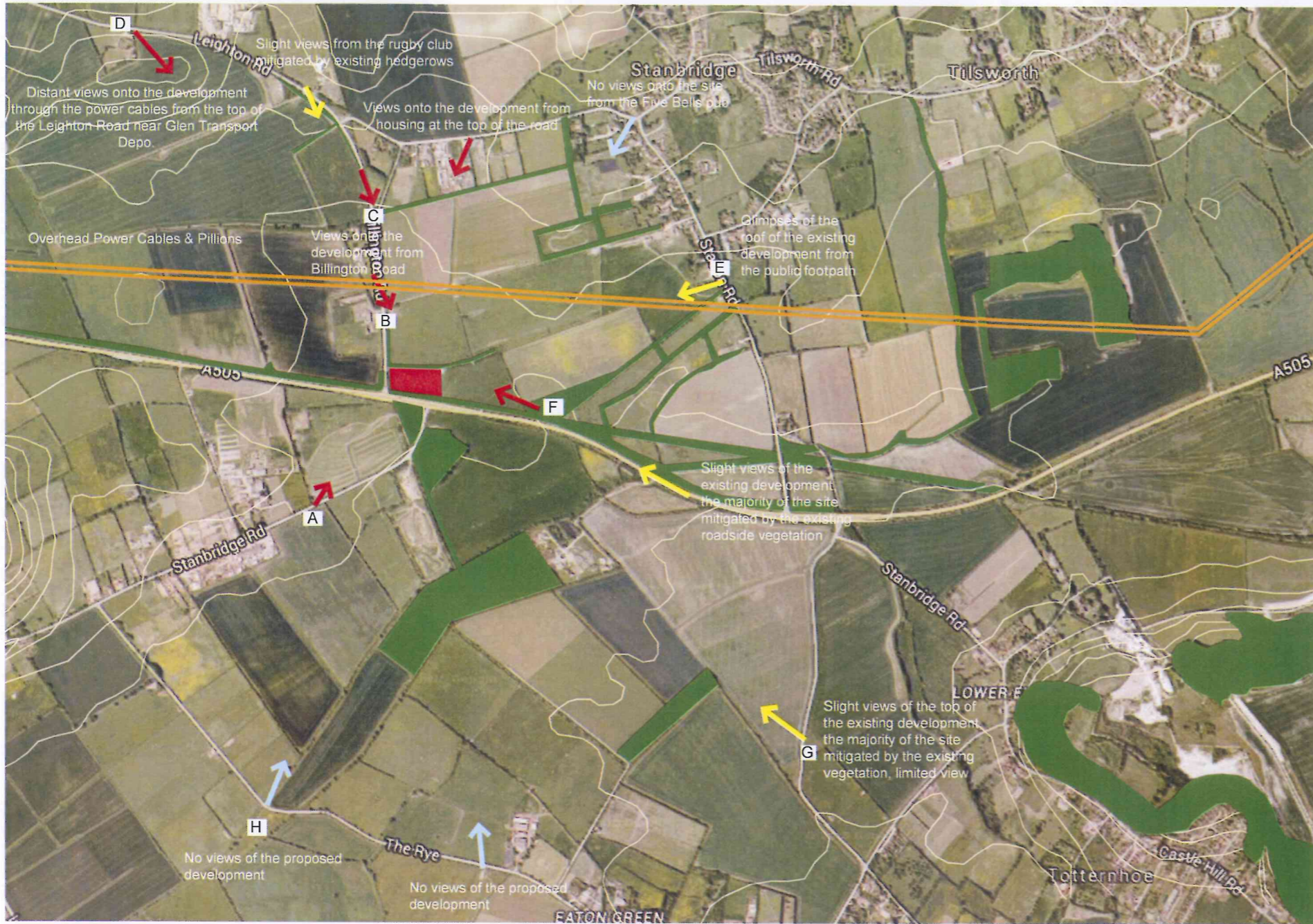
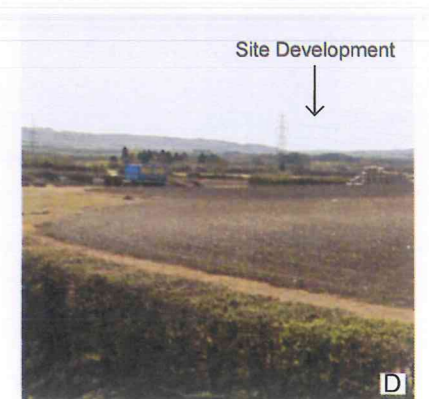
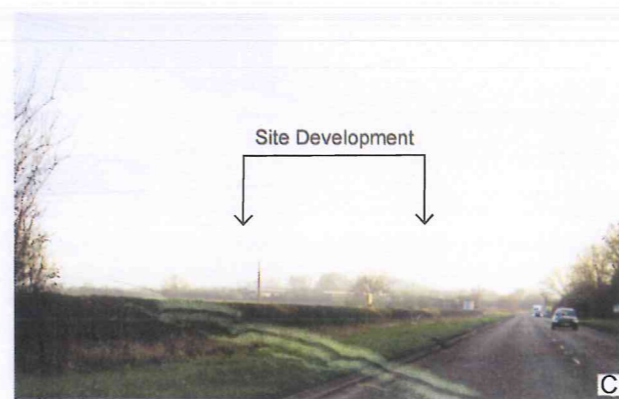
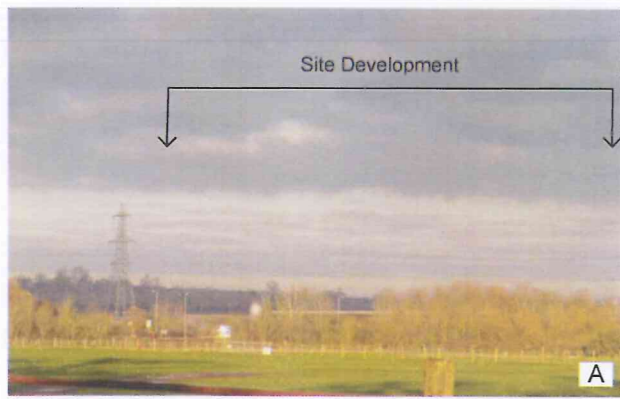


KEY

-  Site Boundary
-  Commercial/Industrial Activity
-  Hedgerows and Vegetation that could impact on the visual mitigation of the site
-  Woodland & Significant Vegetation
-  Locations of Landscape Visual Mitigation
-  Overhead Power Cables & Pylons
-  Public Footpaths
-  Approximate Village Outline (Main Residential Zone)

PROJECT		
Stanbridge Crossing		
CLIENT		
Brickhill Properties		
DRAWING		
Local Context/ Mitigation		
SCALE	DRWG No.	DATE
NTS	QD680_100_02_Rev A	21.01.16
© COPYRIGHT 2015 QUARTET DESIGN		





KEY	
	Principle Elements Existing Vegetation
	Existing Contours
	Views of Site
	Limited Views of Site
	No Views of Site
	Overhead Power Cables & Pylons

PROJECT		
Stanbridge Crossing		
CLIENT		
Brickhill Properties		
DRAWING		
Long Distance Visual Analysis - Winter		
SCALE	DRWG No.	DATE
NTS	QD680_100_01.02	20.10.15
© COPYRIGHT 2015 QUARTET DESIGN		

CB/15/04264

Quantitative comparison of existing, past approved and proposed development

Deans Farm / Miniclipper, Leighton Buzzard

Scheme	Height to Eaves (m)	Height to Ridge (m)	Finished Floor Level (m)	Floorspace (sq m)	Building Footprint(s) (sq m)
Revised	10.5	12	92.50	4,994	2,184 (main building) 2,150 (canopy) 346 (office)
Proposed	13.2	14.7	92.50	4,994	2,184 (main building) 2,150 (canopy) 346 (office)
Pre-app	N.a.	12	N.a.	4,967	2,122 (main building) 2,165 (canopy) 346 (office)